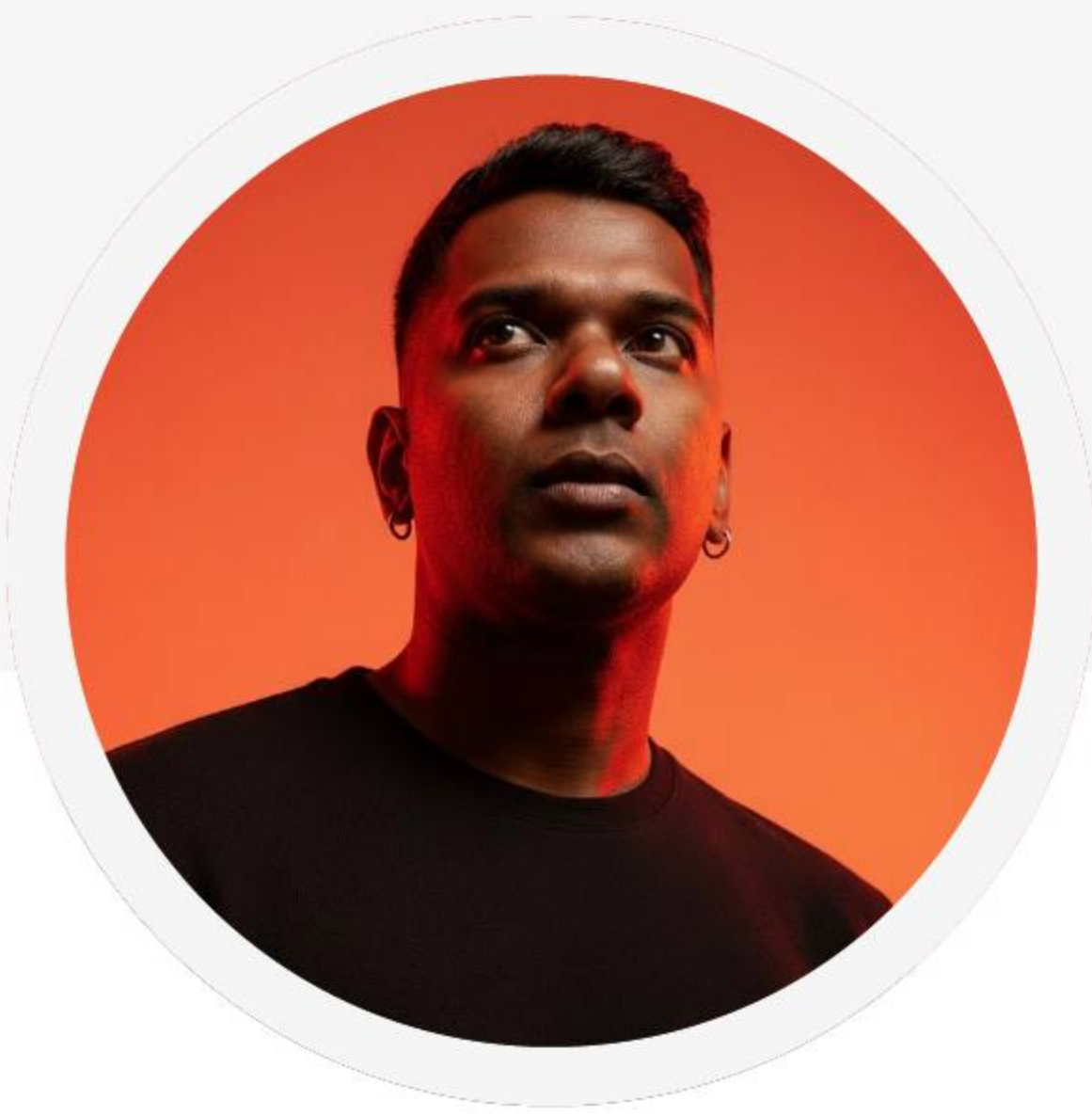


I design complex, high-stakes platforms + AI-assisted workflows with measurable UX impact



Michaelguru

Senior Product Designer

noctmike10@gmail.com michaelguru.com

Profile

Product Designer | AI-assisted workflows & complex systems Designing decision-driven, human-centred experiences for high-context products

Website / Portfolio

michaelguru.com

Domain Expertise

Digital Therapeutics Healthcare

Telemedicine E-commerce

Industry Knowledge

Product Design Agile
User Interface AI Prototyping
User Experience AI-assisted Design
Branding
Storyboarding
Wireframing
Rapid Prototyping
Design Research

Core Expertise

AI Product Design Design Systems Design Systems

UX Research Cross-functional Leadership

Accessibility Complex Workflows

AI tools

ChatGPT Claude.ai Cursor

●●●●●

●●●●●

●●●●●

Perplexity

●●●●●

Experience

LEAD PRODUCT DESIGN

Neuroglee Health

April 2021 - November 2025

- **Led 0→1** product design for a patient-facing app, a caregiver app, and a provider dashboard—from discovery and feature ideation through wireframes, interactive prototypes, usability validation, and developer-ready handoff (specs, components, and design QA).
- **Served as the design-led hub** across 3 time zones (Boston, Bangalore, Singapore), facilitating roadmap clarity, design reviews, and stakeholder communication across product, engineering, clinical, and leadership teams in a distributed, multi-time-zone environment.
- **Owned and executed** a full rebrand: logo refresh, visual identity, scalable design system, component library, and production of digital and print marketing assets—raising brand consistency and accelerating UI delivery across teams.
- **Directed** UX/UI design for multi-domain digital interventions supporting patients with MCI/dementia and their caregivers, managing the full product design pipeline from ideation to execution.
- **Drove structured UX research** (12 user interviews, usability testing, and iterative stakeholder feedback)—translating findings into measurable UX improvements, including a ~30% usability gain (task success / efficiency / error reduction)
- **Redesigned dashboard navigation** and information architecture using a wider viewport and multi-column layout—increasing scanability, reducing navigation depth and clicks, and improving at-a-glance comprehension for older adults and clinical users.
- **Implemented and scaled design processes**, design systems, documentation, and workflow standards to ensure consistency and efficiency across product lines.
- **Partnered with QA** to embed quality earlier in the SDLC and ran A/B tests across patient, caregiver, and provider surfaces—reducing rework, de-risking releases, and informing evidence-based UX decisions.
- **Delivered high-fidelity Figma prototypes and demo flows for stakeholders** and investors—supporting the acquisition of three major U.S. healthcare partners.

UI / UX Designer

Doctor Anywhere

Nov 2020 - Feb 2021

- **Custom icon system:** Designed and shipped a full bespoke icon library aligned to brand guidelines—improving visual consistency, scanability, and affordance clarity across core UI patterns (navigation, actions, states).
- **Marketplace UX/UI:** Led a marketplace interface redesign focused on information hierarchy, layout, and interaction patterns—raising usability and visual coherence and supporting stronger discovery, conversion, and repeat engagement.
- **Onboarding motion:** Built lightweight onboarding animations with Lottie (LottieFiles / JSON-driven motion)—improving first-run comprehension, perceived polish, and narrative clarity for new users without hurting performance.

PRODUCT DESIGNER

HMI Managed Healthcare (formerly HMC)

Sep 2019 - Sep 2020

- **Entirely handle UI UX**, Create user flows, design screens, illustrate icons and empty states, improve the useability of BetterHealth app (BetterHealth provides 24/7 on-demand video consultation with a doctor, enabling you to treat common, non-serious conditions at your own comfort and convenience.)

Notable Achievements

MakeHealthConnect (MHC)

- **BetterHealth App & Dashboard:** Led the full design process from concept to delivery, resulting in the launch of TMARS – a telehealth monitoring system. <https://pmc.ncbi.nlm.nih.gov/articles/PMC9840157/>
- **iPad Telemedicine Stations:** Designed and implemented iPad-based health monitoring stations in dormitories during COVID-19 for real-time vital tracking and remote consultations. <https://www.straitstimes.com/singapore/technology-to-help-foreign-workers-in-dorms-monitor-health-josephine-teo>

Neuroglee Health

- **Mayo Clinic's HABIT Program:** Designed and delivered a tablet-based therapy platform for cognitive care in partnership with the Mayo Clinic. <https://medcitynews.com/2021/09/neuroglee-looks-to-mayo-partnership-digital-therapeutics-to-tackle-mild-cognitive-impairment/>
- **Neuroglee Connect & Nuance Health Integration:** Led the design and integration of a home-based cognitive care platform in collaboration with Nuance Health. <https://www.nuancehealth.org/health-tips-and-news/at-home-cognitive-care-program-in-nuance-health-primary-care>